

Solids handling 'S' pump

Pump end specification

	Metric	US
Capacity	310 m ³ /h	1408 gpm
Total Head	27m	89 ft
Max. Solids Size	100mm	4 in
Self Priming Lift	8.8m	28 ft
Air Handling	48 l/s	100 cfm
Selprime® Absorbs	4.4 kW	6 hp
Power Required	40 kW	54 hp
Pump Speed Max.	1800 rpm	1800 rpm
Pump Speed Min.	1600 rpm	1600 rpm
Impeller Type	Vortex	Vortex
Impeller Blades	6	6
Impeller Diameter	235 mm	9.25 in
Inlet Port	DN 150 PN6	6 PN6
Outlet Port	DN 150 PN6	6 PN6
Length	102 cm	40.2 in
Width	70 cm	27.6 in
Height	82 cm	32.3 in
Weight	315 kg	694 lb

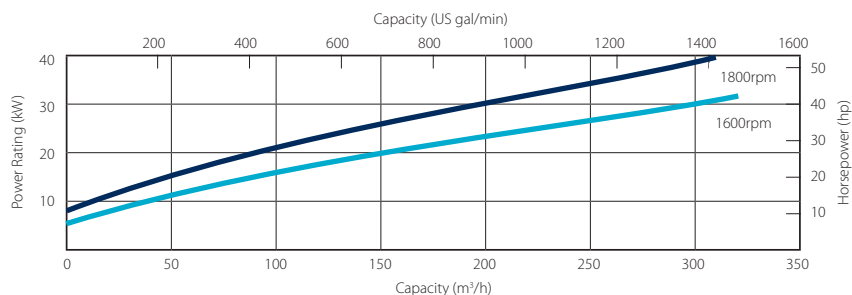
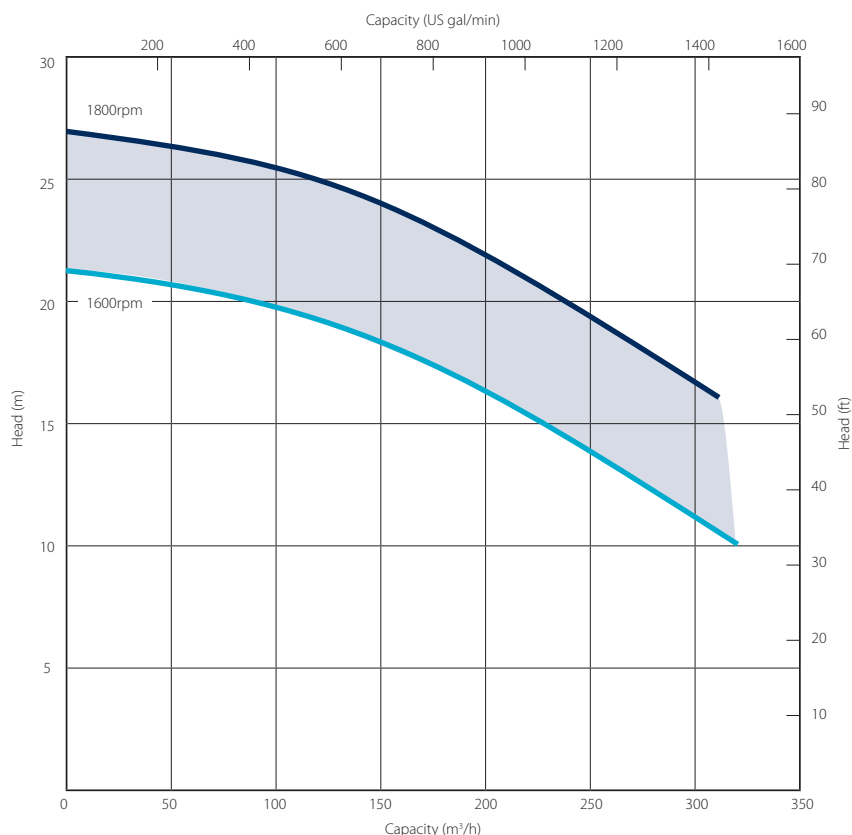
Priming method - Selprime®

The unique original Selwood self priming system utilising a water tolerant diaphragm air pump. An environmentally friendly design that has none of the problems of oil vapour emissions and oil emulsification associated with other priming systems.

The S160Eco Twin Prime unit is fitted with two air pumps for faster priming.

Pump end materials

Pump Casing	Grey Iron BSEN 1561 Grade EN-GJL-200
Impeller	Cast Iron BSEN 1563 Grade EN-GJS-450-10
Wear Plates	NA
Shaft	Steel BS EN 10277 Grade C40+C
NRV Body	Grey Iron BSEN 1561 Grade EN-GJL-200
Mechanical Seal	Silicon Carbide v Silicon Carbide
Pump End Bearing	Ball
Drive End Bearing	Cylindrical Roller



Please note: The above curve covers the complete range and ability of the pump unit. Actual performance will be subject to the motor/engine indicated overleaf.

Solids handling 'S' pump build

Our 'S Range' pumps are the market-leader when it comes to solids handling.

The vortex-flow design (Seltorque®), SelPrime® automatic self-priming, emission compliant engines and ease of operation means trouble-free pumping of

- raw and screened sewage
- sludge or slurry
- water with fine and large solids
- water containing rags and fibres

The S160Eco Twin Prime unit is fitted with two air pumps for faster priming.

The Eco range benefits from:-

- Eco friendly engine which meets current legislation and regulations
- 28.5% increase in pressure

Super Silent units:-

- Quietest pumps on market – EU directive 2000/14/EC
- Improved canopy design
- Auto stop/start control
- Oil drain kit
- Bulk fuel kit
- **Optional** Selwood SelWatch®



Standard build	SuperSilent	
	Metric	US
Length	245 cm	96 in
Width	152 cm	60 in
Height	174 cm	68 in
Dry Weight	1763 kg	3887 lb
Gross Weight	1945 kg	4288 lb
Sound Power	89 LWA	
Sound Pressure @ 1m (3ft)	69 db(A)	
Pump SAE Size	bare shaft	
Engine / Motor	Isuzu 4LE2X	
Emission Rating	Stage IIIB	Tier 4
Engine / Motor Max Speed	1800 rpm	
Fuel Tank Capacity.**	219 lt	58 US gal
BEP - Fuel Consumption	7.8 lt/hr	2.06 US gal/hr

** Fuel tank capacity can be increased with the addition of an auxiliary fuel tank.

Installation drawings are available upon request.

Selwood SelWatch®

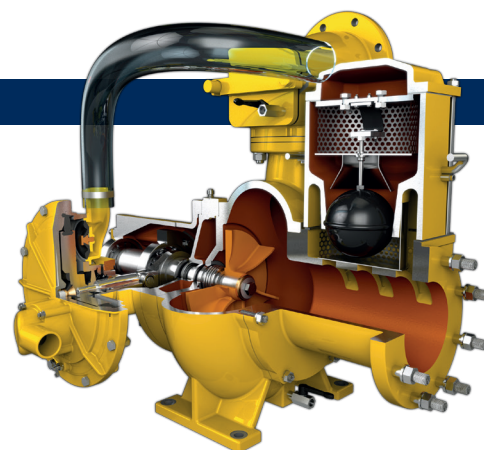
- Remote pump condition monitoring
- Cloud based information management telemetry system
- Monitor pump & engine conditions via Canbus module which links the engine and ECU
- Ability to measure a multitude of pump & engine conditions including:-
 - Engine speed
 - Fuel conditions
 - Engine temperature

Please note: SelWatch may not be available in all territories. Contact your local Selwood Sales Manager or Distributor for details.

Optional extras

Training
Genuine parts
Valves / Fittings
Pump accessories

Tanks & filtration
Pipe stoppers
Hose / pipework



SELWOOD
www.selwood.co.uk

UK Rental
03330 142000

UK Sales
023 8025 0137

International Sales
+44 23 8025 0137

Head Office Bournemouth Road, Chandler's Ford, Eastleigh, Hampshire, SO53 3ZL. T 023 8026 6311 E info@selwood.co.uk